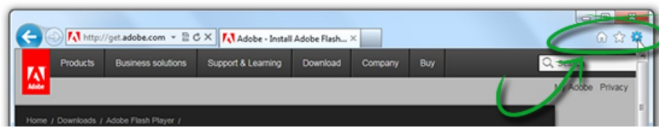
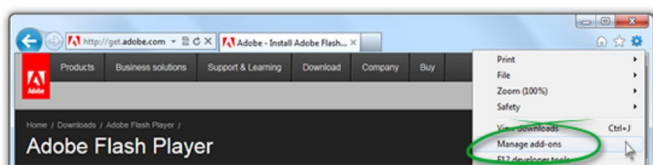


Enable for Internet Explorer



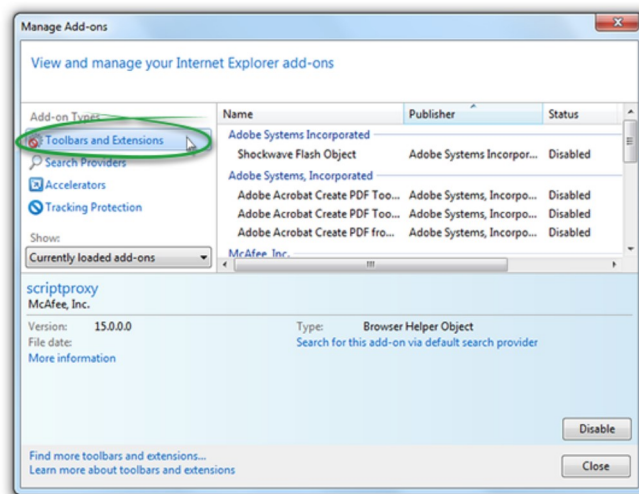
The Tools icon is in the upper-right corner.

- 2 In the pop-up menu that appears, click Manage Add-ons.



Choose Manage Add-ons from Tools menu.

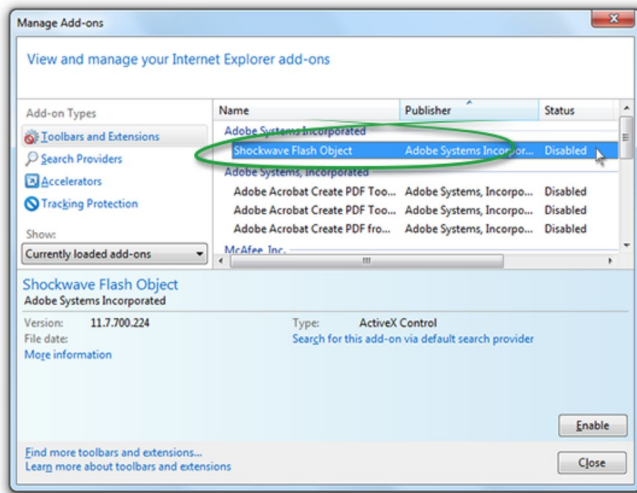
- 3 In the dialog box that appears, select Toolbars and Extensions.



Select Tools and Extensions as the Add-on Types from Manage Add-ons dialog box.

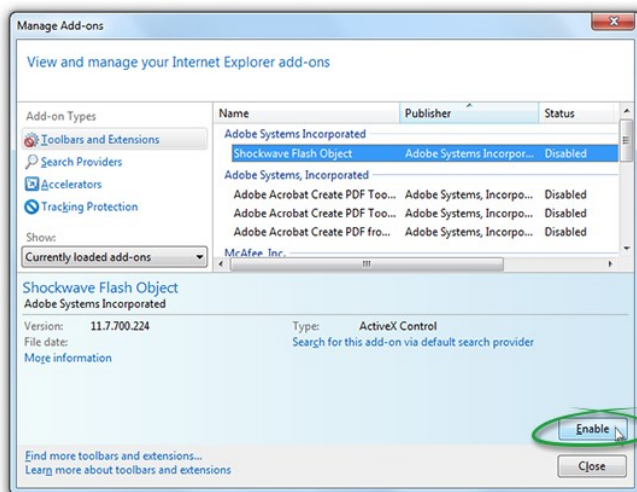
- 4 In the list of Add-ons, look for "Shockwave Flash Object" (another name for Flash Player).

Enable for Internet Explorer



Shockwave Flash Object as the Add-on Type. The Flash is in Disabled status.

- 5 In the lower-right corner of the Manage Add-ons dialog box, click Enable.



Click Enable in the lower-right corner.

- 6 Close the Manage Add-ons dialog box.